

ZyXEL



Productive Network Management Solution for SMB Networks

- Auto Discovery and Device Viewer
- Templates provisioning for easy configuration
- Traffic/Performance monitoring and management
- Alarm and event management
- Batch firmware upgrade
- Feature-rich Layer 2 and Layer 3 configuration
- Tight access control and log management
- Manages up to 150 ZyXEL managed Switches



SMB Network Element Management System

NETATLAS™
WORKGROUP

Benefits

Productive Centralized Network Management Platform

ZyXEL NetAtlas™ Workgroup is a centralized network management software boasting solid features required by small-to-medium, understaffed networks. Its intuitive Web-based user interface, topology-based/device-based viewer and solid features set all work together to realize a friendly and efficient operation experience. The NetAtlas™ Workgroup enables administrators to easily maintain and monitor every switch on the network from a single workstation, allowing efficient network management that relieves administrators from tedious works to better use their time.

Intuitive Hassle-free Operating Interface

No more cryptic commands. With intuitive user-friendly graphical user interface (GUI), the NetAtlas™ Workgroup polls network elements for status to present the graphical topology in Map Viewer. Double-clicking an icon in the Device Viewer will bring up the graphical front panel view and get real-time element status updates.

Configuration templates reduce the time administrators spent on repetitive manual tweaking. With template provisioning, a template can be applied to multiple ports or devices, and configuration changes are just a few mouse clicks away.

Network Health Monitoring and Management

Monitoring network traffics is vital to the awareness of abnormal activities. The NetAtlas™ Workgroup allows users to monitor network traffics and generate graphical report down to the port level. Detailed items such as TX/RX, error packets, collision packets and packet size, etc. can be displayed and logged for further analyses.

In addition, event and alarm management tools can issue SNMP trap and record event details for instantaneous alert. Event logs are displayed in different colors to indicate severity levels. Actions are triggered by system traps automatically without manual initiation for more flexibility and convenience to network managers.

Productive Screen-Based Network Management

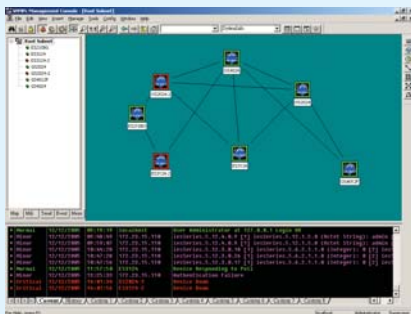
With the NetAtlas™ Workgroup, network maintenance can be done with just a few mouse clicks. Multi-site network operation and maintenance become easier than ever; you can also perform general device maintenance (such as firmware upgrade or configuration file backup/restore) to more than one device on remote networks. With complete Layer 2 switching, Layer 3 IP routing and system management features, efficient device monitoring and configuration become possible for better network quality and cost effectiveness.

Strict Access Management

Tight access control is essential to a secure network. In the NetAtlas™ Workgroup, access to configuration and/or status screens is strictly based on user's login name, password, IP address, as well as three user categories that grant different administration privileges. The NetAtlas™ Workgroup allows one single user to log in at a time, and information such as the user ID, user group, IP address, configuration actions and time will be logged for security reasons. As such network managers know who has logged in, and what did the person do during the session.

Features at a Glance

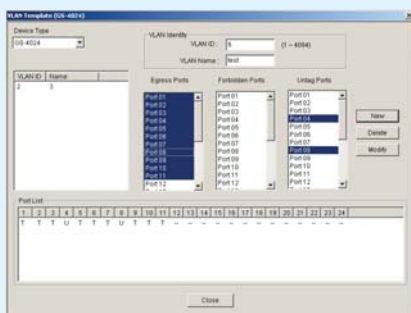
Map Viewer/Device Viewer



Function Supported:

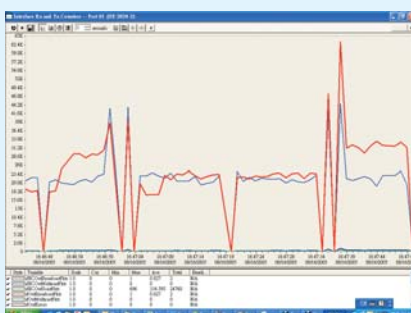
- **Tree View**
 - All managed network elements are shown in a tree structure of up three layers: root map node, submap node, device node.
 - Each node contains specific data and the displayed color indicates its status
- **Device View**
 - The device Panel View displays when you click a device node.
 - Add/delete a submap or device node and update the device topology.
 - Query the status of a managed network element.

Template Provisioning



- To save configuration templates for future use
- The "Copy to" feature allows you to apply configuration templates to multiple network elements or device ports

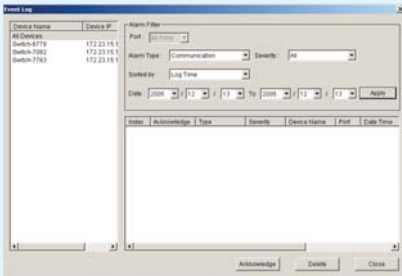
Performance Management



The following port statistic information (also known as counters) are collected:

- **RX Packets Counters**
 - RX Packets, Multicast, Broadcast, Pause and Control
- **TX Packet Counters**
 - TX Packet, Multicast, Broadcast and Pause
- **TX Collision Counters**
 - Single, Multiple, Excessive and Late
- **Error Pkts counters**
 - RX CRC, Length and Runt
- **Distribution counters**
 - 64, 65~127, 128~255, 256~511, 512~1023, 1024~1518 Kbytes and Giant

Alarm/Event Management



The following lists the alarm/event record information:

- Event category: Communication Alarm, Equipment Alarm and QoS Alarm
- Event severity: Critical, Major, Minor, Warning, and Normal
- Event source: the IP address of the managed device and port ID
- Time Stamp: the time at which the event is generated
- Problem: A description about the event

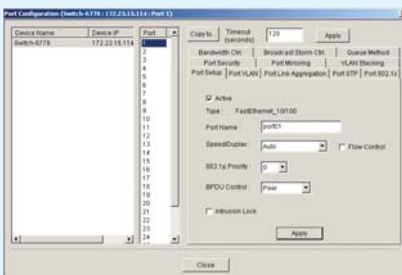
System Management



The following functions are provided for system maintenance:

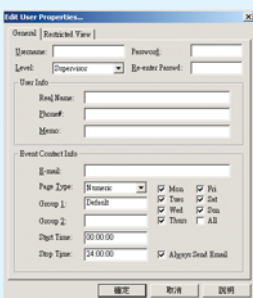
- Display basic system information
- SNMP parameter configuration
- Access Control
- Remote management
- Time server setting
- Firmware upgrade
- Device reset
- Network element configuration backup and restore (automatic or manual), Load Factory Default
- Loopback Test
- 802.1d (MAC Table, ARP Table)

L2/L3 Feature Configuration



- The following lists the settings allowed on the port level: Port Setup, VLAN Port Configuration, LACP, STP, 802.1x, Port Security, Mirror Ports, VLAN Stacking, Bandwidth Control, Broadcast Storm Control, Query Method
- The following lists Layer 2 feature settings on the device: VLAN Type, Enable/Disable IGMP snooping, Enable/Disable Bridge control protocol transparency, MAC Address Learning, GARP Timer, Priority Queue Assignment, STP/RSTP configuration, Enable/Disable Bandwidth control, Enable/Disable Broadcast storm control, Enable/Disable Mirroring, Enable/Disable LACP, System Priority, Group T1~T6, Enable/Disable 802.1x, RADIUS Setting, Enable/Disable Port Security, Queuing Method, VLAN Stacking, Static VLAN configuration, DHCP Relay, Classifier, Policy Rule, DiffServ
- The following lists Layer 3 feature settings on the device: Static Routing, IP Setup, RIP, OSPF, IGMP, DVMRP, IP Multicast, VRRP

Secure Management



- **Access control**
3 access levels based on the user groups: System-Administrator, Operator-Read/Write and Operator-Read Only.
- **Access Log Management**
Access log information includes user name, access level, real user name, phone number, e-mail address and additional information.
- **Log Filter**
To locate access logs based on the IP address of a managed device, the port ID, the operation category and the time the log was created.

Network Protocol and Standard

- RFC 1157 SNMP
- RFC 1905 SNMPv2c
- RFC 1213 MIB II
- RFC 1493 Bridge MIB
- RFC 2674 P-Bridge MIB, Q-Bridge MIB
- RFC 3621 POWER-ETHERNET-MIB
- RFC 1757 RMON
- RFC 1643 Ethernet MIB
- RFC 2233 ifVHCpacketGroup

Specifications

System Requirements

• Hardware

- CPU: Intel Pentium 4, 1.6 GHz (or above)
- 1 GB RAM (or above)
- 10 GB Hard Disk (or above)
- 1024 x 768 Graphical Adapter (or above)
- 10/100 Mbps Ethernet Adaptor

• Software

- Windows 2000, Windows 2003 Server or Windows XP
- SNMPc Network Manager Workgroup Edition for Windows
- Database: PostgreSQL 8.0.3

For more product information, visit us on the web www.ZyXEL.com

Corporate Headquarters
ZyXEL Communications Corp.
Tel: +886-3-578-3942
Fax: +886-3-578-2439
Email: sales@zyxel.com.tw
<http://www.zyxel.com>

ZyXEL Denmark A/S
Tel: +45 39 55 07 00
Fax: +45 39 55 07 07
Email: sales@zyxel.dk
<http://www.zyxel.dk>

ZyXEL France SARL
Tel: +33 (0)4 72 52 97 97
Fax: +33 (0)4 72 52 19 20
Email: info@zyxel.fr
<http://www.zyxel.fr>

ZyXEL Hungary
Tel: +36-1-336-1646
Fax: +36-1-325-9100
Email: info@zyxel.hu
<http://www.zyxel.hu>

ZyXEL North America
Tel: +1-714-632-0882
Fax: +1-714-632-0858
Email: sales@zyxel.com
<http://www.us.zyxel.com>

ZyXEL Poland
Tel: +48225286603
Fax: +48225206701
Email: info@pl.zyxel.com
<http://www.pl.zyxel.com>

ZyXEL Spain
Tel: +34 902 195 420
Fax: +34 913 005 345
Email: sales@zyxel.es
<http://www.zyxel.es>

ZyXEL UK Ltd.
Tel: +44 (0) 1344 303044
Fax: +44 (0) 1344 303034
Email: sales@zyxel.co.uk
<http://www.zyxel.co.uk>

ZyXEL Czech s.r.o.
Tel: +420 241 091 350
Fax: +420 241 091 359
Email: info@zyxel.cz
<http://www.zyxel.cz>

ZyXEL Finland Oy
Tel: +358-9-4780 8400
Fax: +358-9-4780 8448
Email: sales@zyxel.fi
<http://www.zyxel.fi>

ZyXEL Germany GmbH.
Tel: +49 (0) 2405-6909 0
Fax: +49 (0) 2405-6909 99
Email: sales@zyxel.de
<http://www.zyxel.de>

ZyXEL Kazakhstan
Tel: +7-327-2-590-699
Fax: +7-327-2-590-689
Email: sales@zyxel.kz
<http://www.zyxel.kz>

ZyXEL Norway A/S
Tel: +47 22 80 61 80
Fax: +47 22 80 61 81
Email: sales@zyxel.no
<http://www.zyxel.no>

ZyXEL Russia
Tel: +7 (095) 542-8920
Fax: +7 (095) 542-8925
Email: info@zyxel.ru
<http://www.zyxel.ru>

ZyXEL Sweden A/S
Tel: +46 (0) 31 744 77 00
Fax: +46 (0) 31 744 77 01
Email: sales@zyxel.se
<http://www.zyxel.se>

ZyXEL Ukraine
Tel: +380 44 494 49 31
Fax: +380 44 494 49 32
Email: sales@ua.zyxel.com
<http://www.ua.zyxel.com>

