



## Plug-and-Play Desktop Switch for Home Users

- **Compact and Elegant Design**
- **Plug-and-Play Design for Easy Connection to up to 5/8 Networking Devices**
- **Automatically Adjust Power Consumption by Detecting Link Status and Cable Length**

### Benefits

#### Compact, Elegant Design

The ZyXEL ES-105S/ES-108S comes with 5/8 Fast Ethernet ports designed for easy home network extension, while the compact, elegant design and silent operation also fit any home environment easily. The optional wall-mount installation also allows users to free up the room space.

#### Easy Extension of Home Network

The ES-105S/ES-108S with plastic housing offers a cost-effective Fast Ethernet solution for users to easily extend home networks and to fulfill their online gaming, multimedia transferring and streaming needs. The plug-and-play design allows users to easily connect network devices such as PCs, network storages and print servers to the home network without manual configuration involved.

With the N-way auto-negotiation function, the ES-105S/ES-108S connects to network counterparts with highest possible network speed and activates full-duplex mode automatically, while the store-and-forward service brings low latency and error-free packet delivery.

#### Energy Saving via Link Status and Cable Length Detection

The ES-105S/ES-108S features Green solutions that provide power-saving benefits without compromising performance. The ES-105S/ES-108S automatically reduces power usage by detecting any shutdown network device or inactive link. In other words, power consumption of the ES-105S/ES-108S adjusts usage according to the number of active network devices.

The ES-105S/ES-108S can also detect the length of connected Ethernet cables and adjust power usage accordingly. The shorter the Ethernet cable length is, the less power it consumes.

**ES-105S**  
**ES-108S**  
**5/8-port Desktop**  
**Fast Ethernet Switch**



## ES-105S ES-108S 5/8-port Desktop Fast Ethernet Switch

## Specifications

### System Specifications

#### Interface

- ES-105S: 5 x 10/100 Mbps Ethernet ports
- ES-108S: 8 x 10/100 Mbps Ethernet ports

#### Standard

- IEEE 802.3 10Base-T Ethernet
- IEEE 802.3u 100Base-TX Fast Ethernet
- IEEE 802.3 N-way auto-negotiation
- IEEE 802.3x Full duplex operation and flow control

#### Performance

- Auto-MDI/MDIX on all ports
- Transmission method: Store-and-forward architecture
- Data transfer rate (half duplex/full duplex):
  - Ethernet: 10/20 Mbps
  - Fast Ethernet: 100/200 Mbps
- MAC address table:
  - ES-105S: 2K
  - ES-108S: 1K
- Memory buffer:
  - ES-105S: 48 KB
  - ES-108S: 96 KB
- Switching fabric (non-blocking):
  - ES-105S: 1.0 Gbps
  - ES-108S: 1.6 Gbps

### Hardware Specifications

- LED indicator:
  - PWR: Power
  - Per port: Link/Activity
- Power supply:
  - External switching power adapter
  - Input: 100-240 V AC
  - Output: 5 V DC, 0.6 A
- Power consumption:
  - ES-105S: 2.25 Watt max
  - ES-108S: 2.20 Watt max

### Physical Specifications

- Item weight:
  - ES-105S: 160 g (0.35 lb)
  - ES-108S: 190 g (0.42 lb)
- Item dimensions:
  - ES-105S/ES-108S: 150 (W) x 81.2 (D) x 32.2 (H) mm (5.9 (W) x 3.2 (D) x 1.3 (H) inch)
- Packing weight:
  - ES-105S: 339 g (0.74 lb)
  - ES-108S: 363 g (0.80 lb)
- Packing dimensions:
  - ES-105S/ES-108S: 157 (W) x 86 (D) x 96 (H) mm (6.2 (W) x 3.4 (D) x 3.8 (H) inch)

### Environmental Specifications

- Operating environment:
  - Temperature: 0°C ~ 50°C/32°F ~ 122°F
  - Humidity: 10% ~ 95% (Non-condensing)
- Storage environment:
  - Temperature: -40°C ~ 70°C/-40°F ~ 158°F
  - Humidity: 10% ~ 95% (Non-condensing)

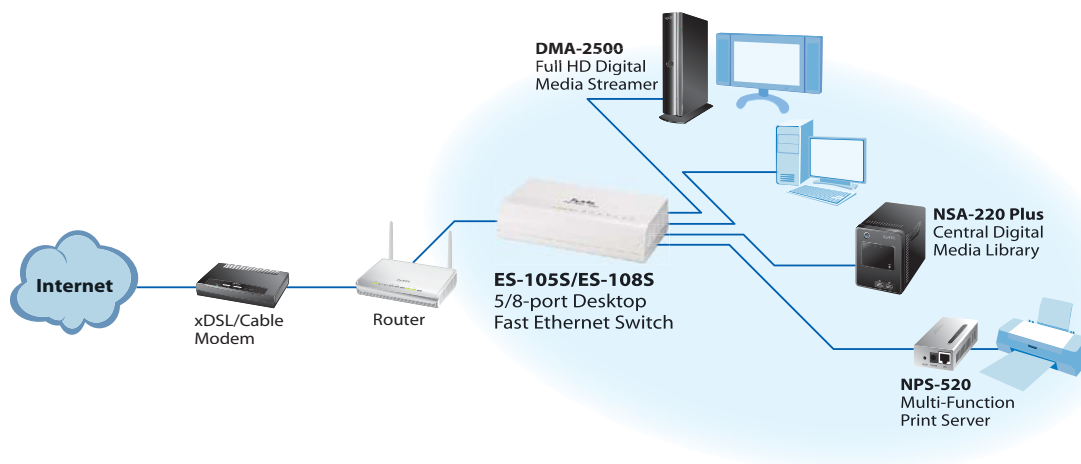
### Certifications

- CE, FCC class B, C-Tick

### Package Contents

- Ethernet Switch
- Power adapter
- User's guide
- Warranty card

## Application Diagram



For more product information, visit us on the web at [www.ZyXEL.com](http://www.ZyXEL.com)

